

Throttle lift-off clunking noises at drive shafts of front axle

Topic number	LI33.30-P-056665
Version	7
Function group	33.30 - Final drive, differential, drive shaft
Date	12/7/22
Validity	Models: All Mercedes-Benz cars with front-wheel drive and 4x4 vehicles
Reason for change	Add Op code

Complaint

Single throttle lift-off clunking noise from the side shaft when moving off (audible at the outboard end). The clunk is heard once when changing from forward to reverse (and vice versa).

Note: Sound file in attachment

Attachments	
File	Description
Beanstandung Lastwechselknacken.mp3	Sound recording of complaint

Cause

If the complaint is eliminated by experimentally loosening the outboard collar nut (by 1 turn), the concern is due to micromovement in the connection between the wheel bearing inner race and the joint housing of the side shaft.

Note: The collar nut must always be replaced after being loosened and must be tightened to the specified torque.

Remedy

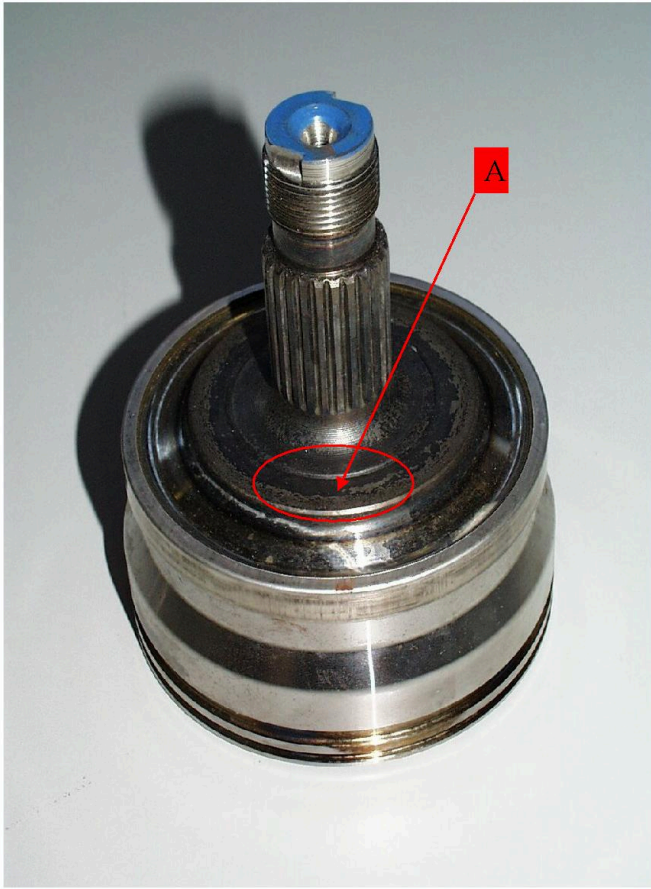
Coat contact surface of side shaft with wheel bearing with Molykote paint. To do this, proceed as follows:

1. Remove outboard side shafts (extract outer joint gearing from wheel hub)
2. Clean contact surface A (see image file in attachment "Outer joint housing before") before coating with Molykote paint (free of dust and grease)
3. Coat contact surface A (see image file in attachment "Outer joint housing after") with Molykote and leave to dry for one hour in removed condition
4. Reinstall side shafts

Note: Before using low friction paint (Molykote) stir or shake it thoroughly.

Attachments	
File	Description
Gelenkgehäuse aussen vor.jpg	Before coating with Molykote paint

XENTRY TIPS



[Gelenkgehäuse aussen nach.jpg](#)

After coating with Molykote paint

XENTRY TIPS



Symptoms						
Power transmission > Noises > Throttle lift-off clunking noise						
Power transmission > Drive shaft > Axle shaft > Noises > Knocking/banging						
Chassis/suspension > Noises > Cracking						
Chassis/suspension > Axle > Front axle > Noises > Cracking						
Parts						
Part number	ES1	ES2	Designation	Quantity	Note	EPC
A0009890152	10		Low-friction paint (Molykote)	1		X
Operation numbers/damage codes						
Op. no.	Operation text		Time	Damage code	Note	
330000	REMOVE/INSTALL PARTS OF LEFT FRONT AXLE SHAFT.			33H1034	Left side shaft	
330000	REMOVE/INSTALL PARTS OF RIGHT FRONT AXLE SHAFT.			33W1034	Right side shaft	
330000	REMOVE/INSTALL PARTS OF FRONT AXLE SHAFTS (BOTH)				Left and right side shafts	
406500	40-6500-01 Perform wheel alignment check				Alignment Check	

